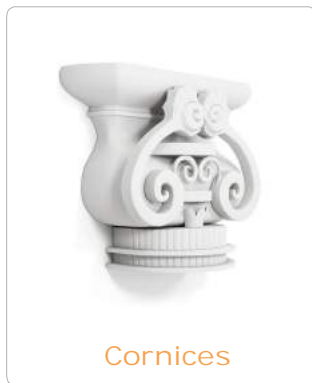


CUT 3000S

MADE IN GERMANY



Balustrades



Cornices



Arch



Others

CUT 3000S - 3D Series

Our Cut 3000S Models are first choice for the building industry. With its big cutting area two standard sizes blocks with up to 2.500mm x 1.600mm x 1.050mm can be process in one go. Due to its open heavy machine table madeout of welded steel profiles blocks can be freely loaded and unloaded with a forklift from all sides. Our machines are allready equipped with four Independent Axes and an fully Automatic Wiretensioner to do extrem tapered cuts. Turntable, horizontal Lathe, ShapeableWire, Multiwire and multiTouch Package are optional available.

Included

- CNC Cutting Machine
- PC with Windows Licence
- 3D Cam Software, CAD-Software

Optionals

- up to 2 Horizontal Turntables (Lathe)
- up to 4 Vertical Turntables
- Shapeable wire
- Multiwire
- multiTouch Package
- multiProfiler Software

Hardware Features

- 4 independent axes (5 optional)
- Automatic wire tensioner for constant wire tension
- Wire temperatur control

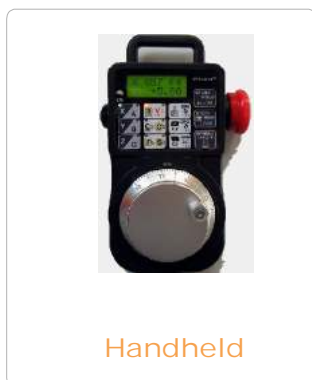
Software Features

- Electronic catalogue with cornices columnes and caps.
- Real time cutting view
- Simulation and 3D view
- USB plugin controller

Highlights



Console



Handheld



Computer



Software



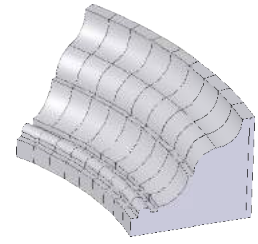
multiProfiler



Step 1



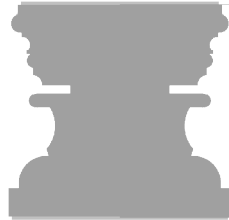
Step 2



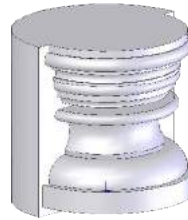
Step 3



multiTurn



Step 1



Step 2



Step 3

Technical Details

		CUT 3100S	CUT 3200S	CUT 3300S
Cutting area mm	X	2.650mm (104")	2.650mm (104")	3.150mm (124")
	Y	1.650mm (65")	1.650mm (65")	1.650mm (65")
	Z	1.300mm (51")	2.650mm (104")	3.150mm (124")
Axis speed		8 m/min		
Accuracy mm		+/- 0.1 mm		
Number of axis		4 (5 optional)		
Wire mm		0.33 mm		
Machine Farme		welded Steepfiles		
Dimensions mm	L	3.200mm	3.200mm	3.800mm
	H	2.050mm	2.050mm	2.050mm
	W	2.100mm	3.450mm	3.950mm

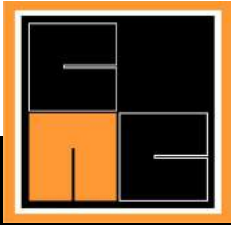
Technical features may change depending on the product chosen by the customer. Pictures are purely demonstrative and indicative.
For a better identification and for business information, please contact cnc-multitool at info@cnc-multitool.com

Application

- Architectural Shapes and Models
- Foam Molding
- 3d letter, 3g logos, Signs
- Frames, Columns, Capitals
- Shops Decorations, Displays
- Themes - Amusement Park
- Stage Scenery and Props

Contact

Neuhäuser Weg 1b
98693 Ilmenau
Germany
T. +49 (0) 3677 877233
F. +49 (0) 3677 67517
info@cnc-multitool.com



www.cnc-multitool.com
MADE IN GERMANY